

Branch Locations

Atlanta

2100 Norcross Pkwy,
Suite 100
Norcross, Georgia 30071
770.246.0334

Charlotte

1201 Woodridge Ctr. Drive
Suite 120
Charlotte, NC 28217
704.357.3000

Raleigh/Durham

2725 E. Millbrook Road
Suite 103
Raleigh, NC 27604
919.876.8522

Greensboro

3517 West Wendover Avenue
Greensboro, NC 27407
336.808.8000

Fayetteville / Distribution & Service Center

831 Tom Starling Road
Fayetteville, NC 28306
910.321.7700

Corporate Headquarters

2604 Fort Bragg Road
Fayetteville, NC 28303
910.321.7700

Greenville

205 E. Arlington Blvd.
Greenville, NC 27858
252.756.5716

Hickory

1966 Briarwood Drive
Hickory, NC 28602
828.294.2811

Asheville

1314A Patton Avenue
Asheville, NC 28806
828.254.8000

Wilmington

249 South Kerr Avenue
Wilmington, NC 28403
910.791.2266

Outer Banks

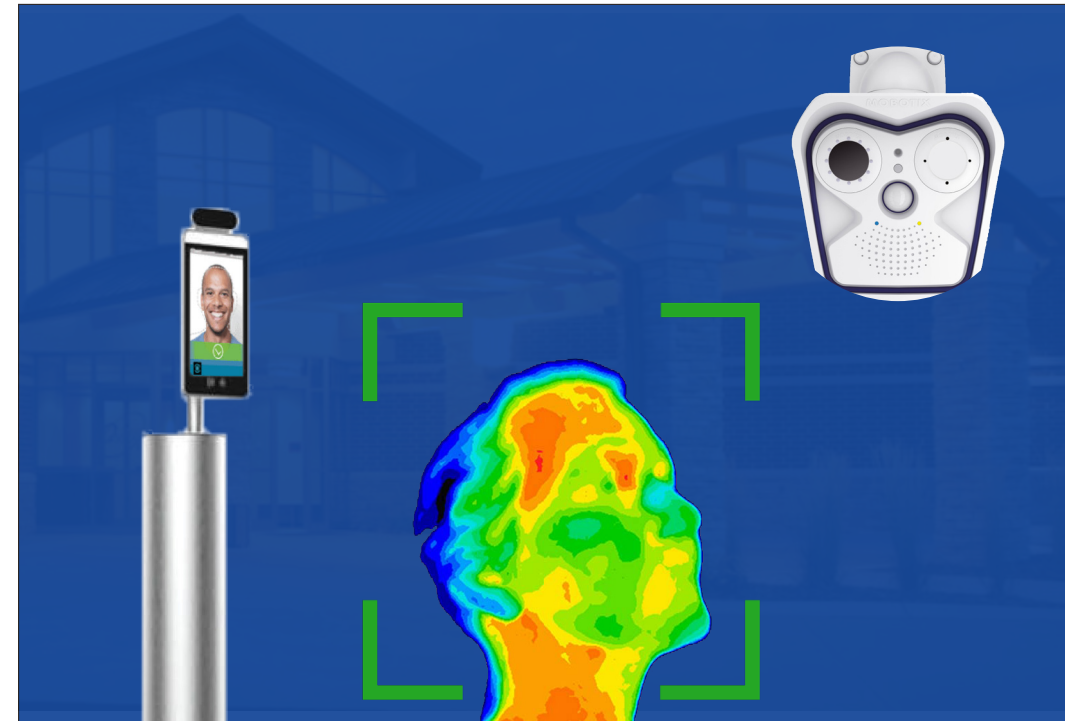
2801 N. Croatan Highway
Kill Devil Hills, NC 27948
252.441.1998



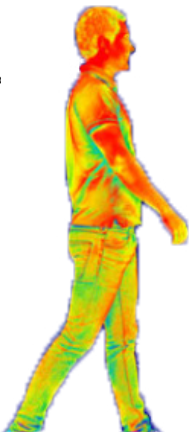
SYSTEMEL's

BUSINESS EQUIPMENT

Thermal Technology Solutions



SYSTEMEL®



EASY
SIMPLE
AFFORDABLE

THERMAL TECHNOLOGY SOLUTIONS

DETECT AND DEFEND YOUR ORGANIZATION AGAINST INVISIBLE



Personnel Management Kiosks

Take control of your work environment! Our Personnel Management Solutions feature check-in and temperature verification capabilities. These solution can also be programmed for facial identification, with users easily added in a few short clicks. Designed to help protect the health and safety of both employees and guests by preventing anyone with a temperature from entering a facility.



FLEXIBLE

Personnel Management Solutions are available in freestanding and countertop configurations.



ANTIMICROBIAL

An antimicrobial powder coat finish can be applied to the base of the unit to ensure durability and prevent the spread of germs.



SECURE

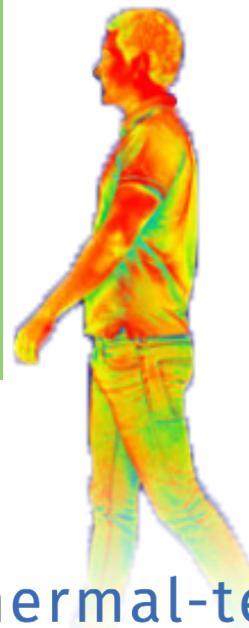
Create alerts when individuals above the temperature threshold and those without access attempt to enter.

**Visit our website for more information on the different Personnel Management Solutions we offer*



MOBOTIX Thermal Radiometry Technology

More and more businesses have been called upon to provide better security for their employees, premises and the surrounding areas. Employees want to navigate the workplace with ease and employers want to be more aware of threats, intruders and vandals with an eye toward proactive awareness of a breach and defusing highly dangerous situations. By using heat signatures and applying ranges based on the environment and application, MOBOTIX Thermal Solutions mitigate overheating, risk of fires, identify elevated temperatures and enable first line defense in complete darkness as well as during the day. With MOBOTIX overlay you can distinguish actual event's, risk areas and react faster while still having a secure overview of the area in question.



PROTECT

MOBOTIX TR automatically triggers an alert upon the early detection of possible hazards such as smoldering fires, overheated appliances and other sources of heat or fire at distances up to several hundred meters.



PREVENT

With smart security solutions from MOBOTIX, we can provide actionable information for you to prevent a potential disaster within your offices, schools, stores or factory facilities and their perimeters.



ANALYZE

The built-in intelligence thermal imaging solution can help you analyze processes, situations and behaviors to make decisions now that will impact your future.

800.849.5900 • systeloa.com/thermal-technology

atlanta • charlotte • raleigh • greensboro • fayetteville • hickory • asheville • wilmington • greenville • outer banks